

Grow Native Plants

Provide better habitat for pollinators and wildlife by replacing invasive plants in your landscaping with these and other native plants. Get free resources at:
OCInvasives.org



Butterflyweed

Purple
Coneflower

Cardinal Flower



Black Eyed Susan

Get in Touch!



Invasive species are one of the greatest threats to Orange County's natural resources. We work with local landowners, educators and agencies all over the county to help combat the spread of invasives through education and action.

OCInvasives.org

812-203-3033

OrangeSWCD@gmail.com

573 SE Main St., Paoli, IN 47454



Orange County
OCIP
Invasives Partnership

Orange County Invasives Partnership



OCIP is a coalition of Orange County citizens aimed at promoting education about invasive species to protect our native species, natural resources and land values of our communities.

What Are Invasive Plants?

An invasive plant is any plant that is not native and whose introduction causes or is likely to cause economic or environmental harm or harm to human health. Invasive plants decrease biodiversity, harm wildlife and reduce habitat for pollinators.

Where Do They Come From?

Most of the invasive plants in Orange County were brought from Asia for landscaping purposes. They have since escaped cultivation from our yards and have spread into our forests and byways.

What Is OCIP Doing About It?

OCIP provides resources to Orange County landowners to help them identify and manage invasive plants on their properties.

- We host regular field days and workshops to educate about invasives.
- We provide FREE invasive plant surveys for all county landowners.
- We conduct invasive control workdays yearly on Hoosier National Forest land.

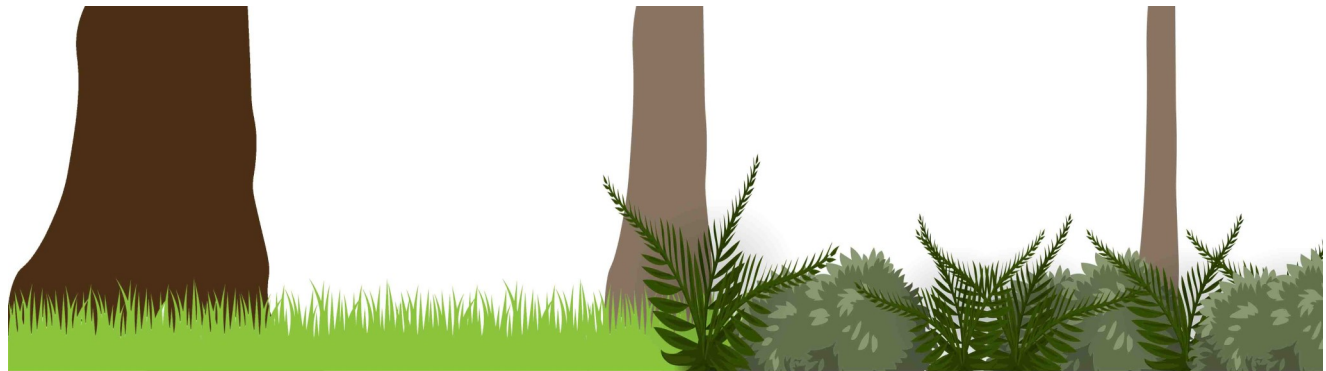
Why Should I Care About Invasive Plants?

- Invasive plants hurt wildlife by crowding out the native plants that our native animals need for food and cover. This reduces the number and variety of forest wildlife available for hunting and recreation. It can also make a nice stroll through fields and forests painful through a tangled thorny mess in areas invaded with certain types of invasive plants.
- Most invasive shrubs and trees are little used by native insects. This reduces the habitat available for beneficial pollinators and predatory insects, as well as reducing the amount of food available for birds to feed their nestlings.
- Invasive plants can become weedy in a home garden, crowding out other landscaping.

Invasive Plants

vs.

Native Plants



Invasive stiltgrass

Native ferns & shrubs

Invasive plants, like Japanese Stiltgrass, crowd out native ferns, shrubs and woodland spring ephemerals. This creates a monoculture in the understory that reduces the amount of native plants that are essential for a healthy food web.

What Can I Do to Help?

Control invasive plants and grow more native plants. It's really that simple!

For help on how to do that, go to OCInvasives.org for great information how to get started!