

TRUSTWORTHY
LOYAL
HELPFUL
FRIENDLY...
AND INVASIVE FREE

MAUMEE SCOUT RESERVATION – HOOSIER TRAILS COUNCIL BSA

DAN SHAVER – FOREST BANK OPERATIONS MANAGER

THE NATURE CONSERVANCY

6/21/2018

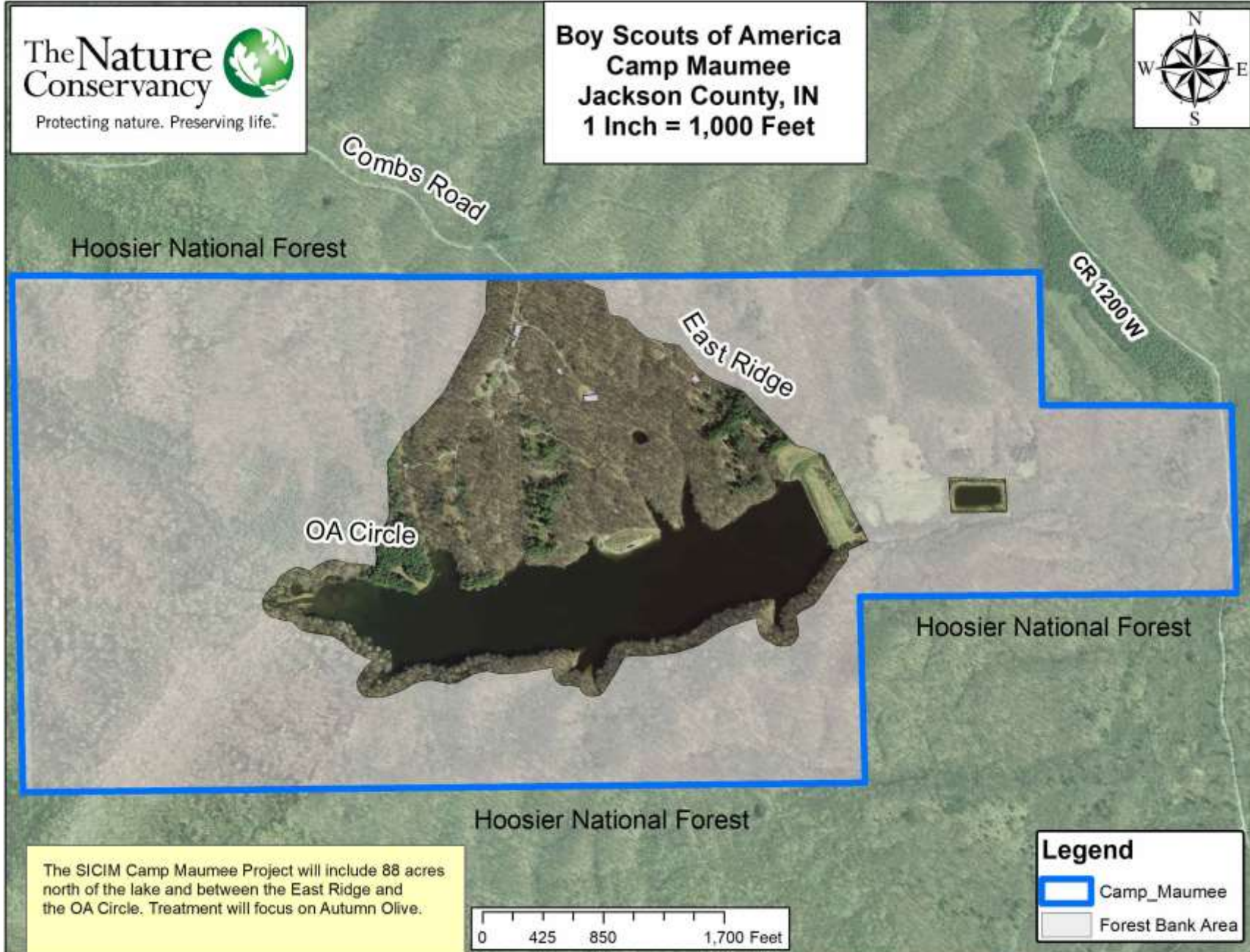
HISTORY OF CAMP MAUMEE

- 640 ACRE BOY SCOUT CAMP IN JACKSON COUNTY
- 64 ACRES LAKE TARZIAN
- PROGRAMMING INCLUDES SHOOTING SPORTS, WATERFRONT, HANDICRAFTS, ARTS AND NATURE
- OPERATING AS A CAMP SINCE 1972

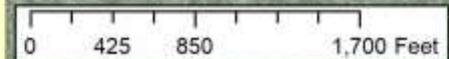




Boy Scouts of America
Camp Maume
Jackson County, IN
1 Inch = 1,000 Feet



The SICIM Camp Maume Project will include 88 acres north of the lake and between the East Ridge and the OA Circle. Treatment will focus on Autumn Olive.



Legend

-  Camp_Maume
-  Forest Bank Area

LAND USE HISTORY



INQUIRY #: 4161787.4

YEAR: 1960

| = 750'

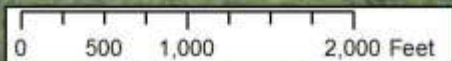






On October 2,9,13,15 and 16, 2014, a forest inventory and property inspection was conducted by Dan Shaver and Chris Neggars. All 221 points on the map were visited and sample points measured. Corners and property lines were viewed at the same time.

All visible land outside the subject property is owned and managed by the US Forest Service.



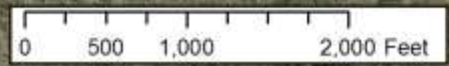
Legend

- Forest Bank Area
- Roads
- Creeks

- TIMBER HARVEST 2013
- FOREST INVENTORY FALL OF 2014



**Boy Scouts of America
Camp Maumee
Forest Stand Type Map
Jackson County, IN
1 Inch = 1,000 Feet**



Legend

Stand Types

- Bottomland Hardwood
- Mature Mixed Hardwood
- Mixed Hardwood
- Oak/Hickory
- Regeneration Opening
- Shortleaf Pine
- White Pine
- Roads

- ENROLLED IN THE FOREST BANK IN 2015

CAMP MAUMEE FORESTS



CAMP MAUMEE INFRASTRUCTURE



CAMP MAUMEE INVASIVE SPECIES

- AUTUMN OLIVE
- MULTIFLORA ROSE
- JAPANESE STILTGRASS
- JAPANESE BARBERRY
- JAPANESE HONEYSUCKLE
- BUSH HONEYSUCKLE
- PRIVET
- ...AND THEN SOME



INVASIVE SPECIES TREATMENT – JOINT CHIEFS EQIP

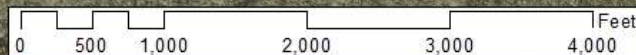


**Boy Scouts of America
Camp Maumee
EQIP Project Map
Jackson County, IN
1 Inch = 1,000 Feet**



- 2017 COMPLETE REGENERATION OPENINGS
- 2018 OAK WOODLAND RESTORATION
- 2019 OAK WOODLAND RESTORATION
- 2019 GENERAL TIMBER STAND IMPROVEMENT WITH NNIS TREATMENT

Map prepared April, 2016

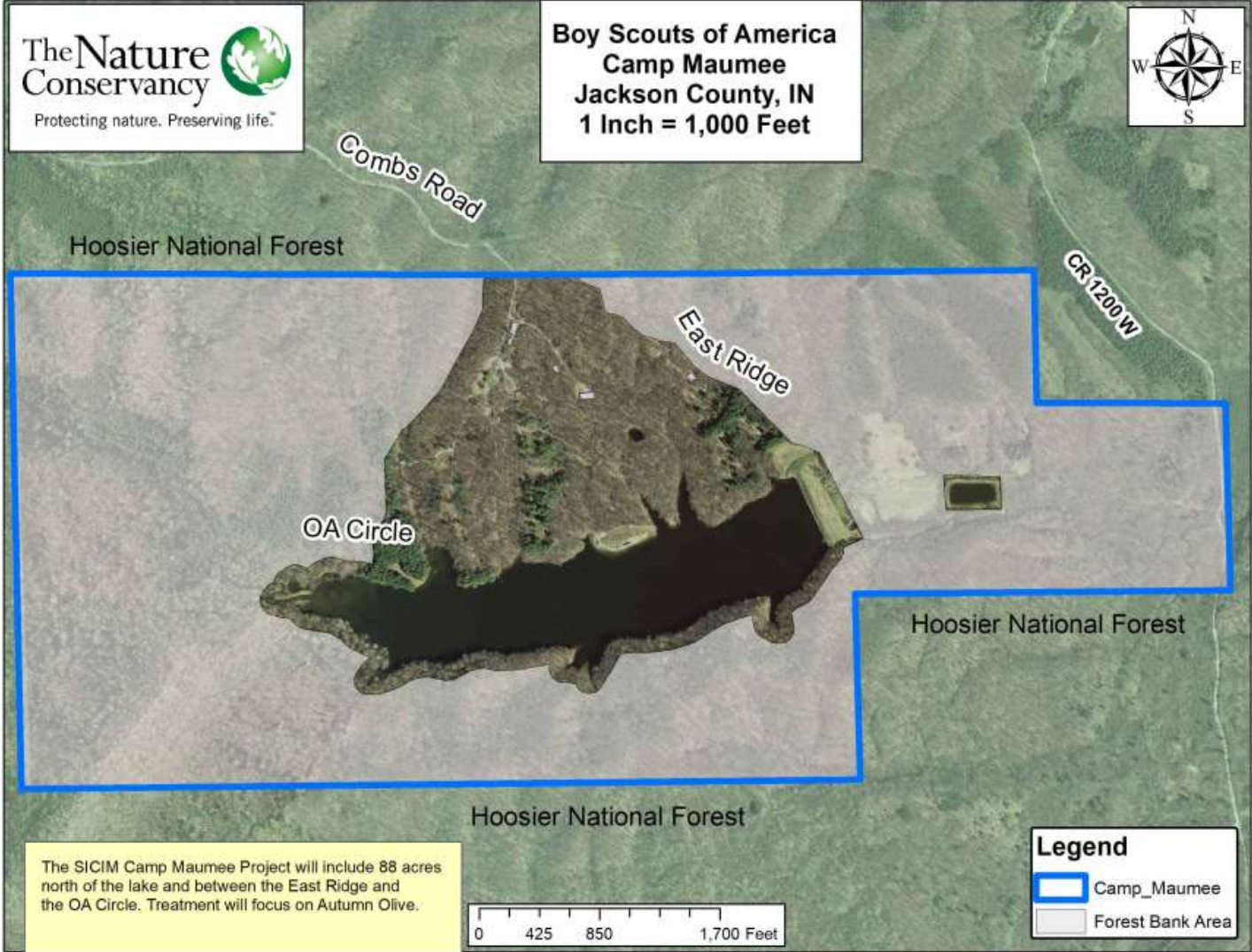


Legend	
EQIP Practice, Year	
	Complete Regen Opening, 2016
	Oak Woodland Restoration, 2017
	Oak Woodland Restoration, 2018
	General TSI, 2018
	Roads
	Creeks

JOINT CHIEFS - HNF



INVASIVE SPECIES TREATMENT – SICIM



- FOCUSED ON AUTUMN OLIVE IN THE AREA NOT ENROLLED IN THE FOREST BANK
- MACHINE SPRAYING
- BACKPACK SPRAYING
- BOY SCOUT VOLUNTEERS
- TNC STAFF

SICIM - ASSISTANCE



- \$7,500 FROM SICIM
- EQUIPMENT AND HERBICIDE
- HIRE STAFF TO TREAT INVASIVE PLANTS
- TNC MATCH 34% - \$3910
- TREAT 88 ACRES – ROUGHLY \$130 PER ACRE

NNIS TREATMENT –

- TREAT AUTUMN OLIVE AND OTHER WOODY INVASIVE PLANTS.
- TREAT SPROUTS AND SEEDLINGS FROM PREVIOUS TREATMENTS
- FOLIAR AND CUT SURFACE

IS CAMP MAUMEE INVASIVE FREE?

- BY 2019 – THE MAJORITY OF THE PROPERTY WILL HAVE BEEN TREATED FOR NNIS
- MULTIPLE TREATMENTS IN THE WORST AREAS
- PRODUCTION OF SEED AND ABILITY TO SPREAD ONTO HNF GREATLY REDUCED
- BETTER OPPORTUNITIES TO TEACH SCOUTS, DEMONSTRATE CONTROL AND WORK TO KEEP THE AREA NICE



- KEYS TO NNIS TREATMENT ON CAMP MAUMEE
 - MANAGEMENT PLAN
 - MULTIPLE PROGRAMS UTILIZED
 - PLAN TO CONTINUE WITH NNIS TREATMENT